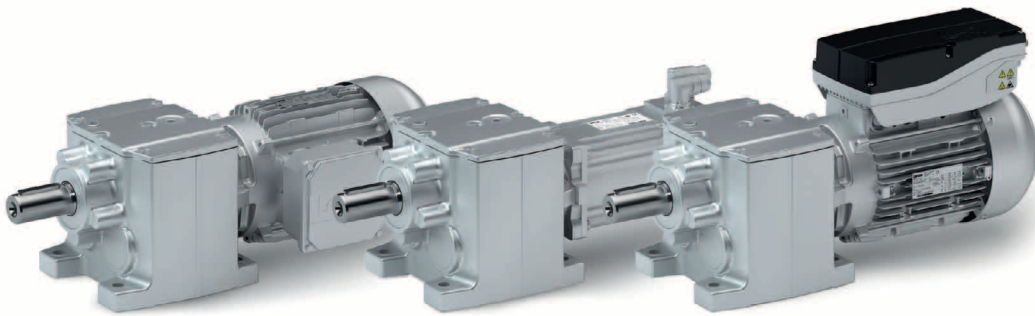


# Robust and precise application.



Our efficient helical gearboxes boast high permissible radial forces, closely stepped ratios and low backlash.

They are available in 2-stage and 3-stage designs with a maximum torque of 450 Nm and ratios of up to  $i=370$  depending on your individual requirements.

## Highlights

- Precision scaling for size/torque ensures optimal machine adjustments
- Standardised shaft and flange dimensions for easy machine integration
- Exceptional efficiency of 94% or more

## Technical data

Gearbox size		g500-H45	g500-H100	g500-H140	g500-H210	g500-H320	g500-H450
Rated torque	[Nm]	45	100	140	210	320	450
Ratio range		2.6 - 60	3.3 - 60	3.3 - 75	3.3 - 370	3.4 - 320	3.4 - 370
Solid shaft dimensions	[mm]	14 x 28 20 x 40	20 x 40	25 x 50	25 x 50	30 x 60	30 x 60 35 x 70
Flange dimensions	[mm]	120 140 160	120 140 160	120 140 160 200	160 200	200 250	250 300

# g500-H helical geared motors

Gearbox

When used in conjunction with three-phase AC motors and servo motors, our helical gearboxes form a compact, powerful drive unit. Numerous options at the input and output ends ensure that the drive can be easily and precisely adjusted to suit your application.

## Designs

- With Lenze Smart Motor m300, rated torque of 1.75 Nm and 5 Nm
- With IE1 / IE2 three-phase AC motors according to the ErP Directive: Power range 0.06 to 9.2 kW
- With inverter-optimised MF three-phase AC motors: Power range 0.55 to 22 kW
- With synchronous servo motors and asynchronous servo motors Power range:0.25 to 9.1 kW

## Tailored to your individual ambient conditions

Gearbox with	Lenze Smart Motor	Three-phase AC motors	Servo motors
Enclosure			
EN 60529	IP55		IP54 / IP65
Energy efficiency class		IE1, IE2 or inverter-optimised	
Approvals	cURus, GOST-R, CCC and UkrSepro		
Climatic conditions			
Storage temperature	-30 to 60 °C		
Operating temperature	-20 to 40 °C		
Surface and corrosion protection			
OKS-G (primed)	1K primer		
OKS-S (small)	2K PUR top coat		
OKS-M (medium)	1K primer, 2K PUR top coat		
OKS-L (large)	2K EP primer, 2K PUR top coat		

### Perfect mechatronic integration with the Lenze Smart Motor

- Covers a wide range of applications
- Reduces the number of different versions by up to 70 %
- Offers exceptional energy efficiency over a long service life
- Achieves greater productivity and maximum reliability

**Lenze  
BlueGreen  
Solutions**

g500:  
min. 94% efficiency