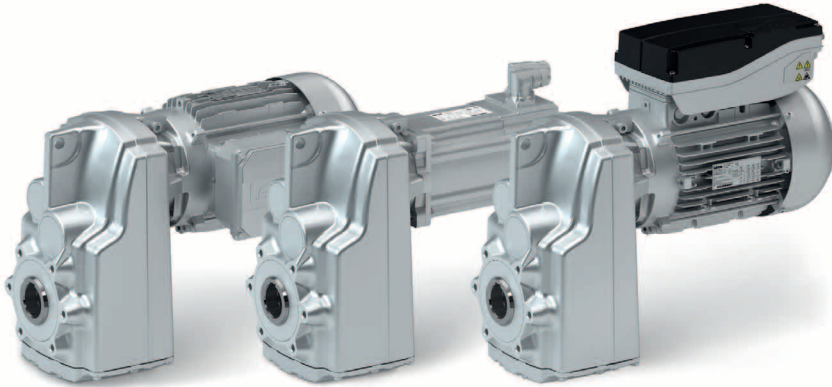


# Efficient and slim-line application.



Our slim-line shaft-mounted helical gearboxes boast high permissible radial forces, closely stepped ratios and low backlash.

They are available in 2-stage and 3-stage designs with a maximum torque of 660 Nm and ratios of up to  $i=500$  depending on your individual requirements.

## Highlights

- Compact design saves on installation space required for the machine
- Solid shaft, hollow shaft and shrink disc for direct integration into the machine
- Low backlash at axial output optimises efficiency
- High centre distance provides more free space in your application

## Technical data

Gearbox size		g500-S130	g500-S220	g500-S400	g500-S660
Rated torque	[Nm]	130	220	400	660
Ratio range		3 – 100	4 – 450	4 – 500	5 - 420
Solid shaft dimensions	[mm]	25 x 50	25 x 50	30 x 60	35 x 70 40 x 80
Hollow shaft dimensions	[mm]	25	25 30	30 35	40 45
Flange dimensions	[mm]	160	160	200	200 250

# g500-S shaft-mounted helical geared motors

Gearbox

When used in conjunction with three-phase AC motors and servo motors, our shaft-mounted helical gearboxes form a compact, powerful drive unit. Numerous options at the input and output ends ensure that the drive can be easily and precisely adjusted to suit your application.

## Designs

- With Lenze Smart Motor m300, rated torque of 1.75 Nm and 5 Nm
- With IE1 / IE2 three-phase AC motors according to the ErP Directive: Power range 0.06 to 9.2 kW
- With inverter-optimised MF three-phase AC motors: Power range 0.55 to 22 kW
- With synchronous servo motors and asynchronous servo motors: Power range: 0.25 to 9.1 kW

## Tailored to your individual ambient conditions

Gearbox with	Lenze Smart Motor	Three-phase AC motors	Servo motors
Enclosure	IP55		IP54 / IP65
EN 60529			
Energy efficiency class	IE1, IE2 or inverter-optimised		
Approvals	cURus, GOST-R, CCC and UkrSepro		
Climatic conditions			
Storage temperature	-30 to 60 °C		
Operating temperature	-20 to 40 °C		
Surface and corrosion protection			
OKS-G (primed)	1K primer		
OKS-S (small)	2K PUR top coat		
OKS-M (medium)	1K primer, 2K PUR top coat		
OKS-L (large)	2K EP primer, 2K PUR top coat		

### Perfect mechatronic integration with the Lenze Smart Motor

- Covers a wide range of applications
- Reduces the number of different versions by up to 70 %
- Offers exceptional energy efficiency over a long service life
- Achieves greater productivity and maximum reliability

**Lenze  
BlueGreen  
Solutions**

g500:  
min. 94% efficiency